

y, we cry glor - y.  
ly, we cry ho - ly.



Glor - y, glor - y to the Great I Am.  
Ho - ly, ho - ly to the Great I Am.

### Chorus



For You a - lone are worth - y. For

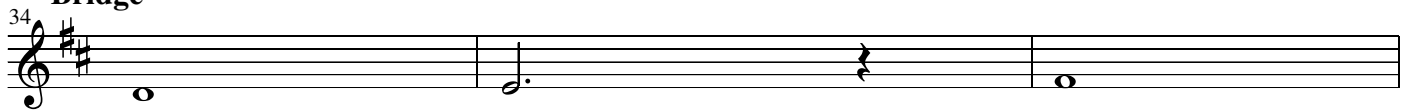


You a - lone are the Lamb. For You a - lone are worth -



y. For You a - lone are the Lamb.

### Bridge

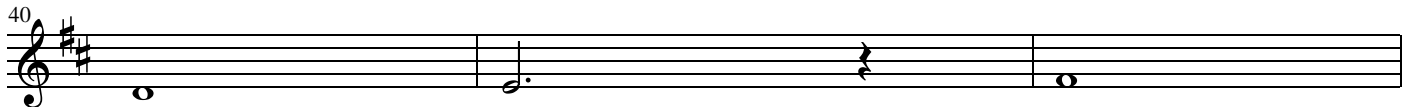


Je - sus, Je -



sus.


40



Je - sus. Je -

Detailed description: This block contains the first musical staff, starting at measure 40. The staff is in treble clef with a key signature of two sharps (F# and C#). It consists of four measures. The first measure has a whole note G4. The second measure has a dotted half note G4. The third measure has a whole rest. The fourth measure has a whole note G4. Below the staff, the lyrics "Je - sus. Je -" are aligned with the notes.

43

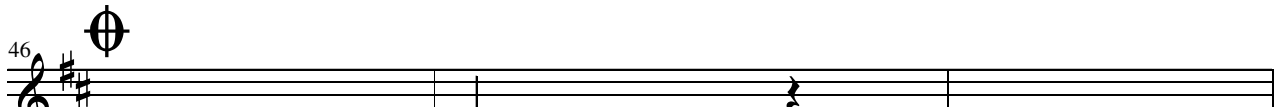


Last time to Coda  $\text{\textcircled{C}}$

sus. \_\_\_\_\_

Detailed description: This block contains the second musical staff, starting at measure 43. The staff is in treble clef with a key signature of two sharps. It consists of four measures. The first measure has a dotted half note G4. The second measure has a quarter note A4, quarter note B4, and quarter note C5 beamed together. The third measure has a quarter note D5, quarter note E5, and quarter note F#5 beamed together. The fourth measure has a whole rest. The staff ends with a double bar line and repeat dots. Above the staff, the text "Last time to Coda" is followed by a Coda symbol. Below the staff, the lyrics "sus. \_\_\_\_\_" are aligned with the first measure.


46



Je - sus, Je -

Detailed description: This block contains the third musical staff, starting at measure 46. The staff is in treble clef with a key signature of two sharps. It consists of four measures. The first measure has a whole note G4. The second measure has a dotted half note G4. The third measure has a whole rest. The fourth measure has a whole note G4. Above the first measure, there is a Coda symbol. Below the staff, the lyrics "Je - sus, Je -" are aligned with the notes.

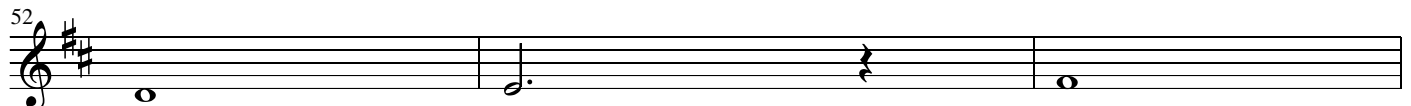
49



sus. \_\_\_\_\_

Detailed description: This block contains the fourth musical staff, starting at measure 49. The staff is in treble clef with a key signature of two sharps. It consists of four measures. The first measure has a dotted half note G4. The second measure has a quarter note A4, quarter note B4, and quarter note C5 beamed together. The third measure has a quarter note D5, quarter note E5, and quarter note F#5 beamed together. The fourth measure has a whole rest. Below the staff, the lyrics "sus. \_\_\_\_\_" are aligned with the first measure.

52



Je - sus, Je -

Detailed description: This block contains the fifth musical staff, starting at measure 52. The staff is in treble clef with a key signature of two sharps. It consists of four measures. The first measure has a whole note G4. The second measure has a dotted half note G4. The third measure has a whole rest. The fourth measure has a whole note G4. Below the staff, the lyrics "Je - sus, Je -" are aligned with the notes.

55



sus. \_\_\_\_\_

Detailed description: This block contains the sixth musical staff, starting at measure 55. The staff is in treble clef with a key signature of two sharps. It consists of four measures. The first measure has a dotted half note G4. The second measure has a quarter note A4, quarter note B4, and quarter note C5 beamed together. The third measure has a quarter note D5, quarter note E5, and quarter note F#5 beamed together. The fourth measure has a whole rest. Below the staff, the lyrics "sus. \_\_\_\_\_" are aligned with the first measure.